

2017

РОССИЙСКАЯ ФЕДЕРАЦИЯ
(РОССИЯ)

ОБЩЕСТВО С ОГРАНИЧЕННОЙ ОТВЕТСТВЕННОСТЬЮ

**ЗАВОД
ЮГМАШ**

РФ, Краснодарский край, 350080, г. Краснодар, ул. Симферопольская, дом 55/1, помещение 202;

Тел./факс: 8(861) многоканальный 236-25-50, 236-24-61

www.yugmash.ru e-mail: t33367@mail.ru skype: yugmash

ПРОИЗВОДСТВО НЕФТЕГАЗОВОГО ОБОРУДОВАНИЯ
И СЕРВИСНОЕ СОПРОВОЖДЕНИЕ ПРОЦЕССА БУРЕНИЯ И СТРОИТЕЛЬСТВА СКВАЖИН

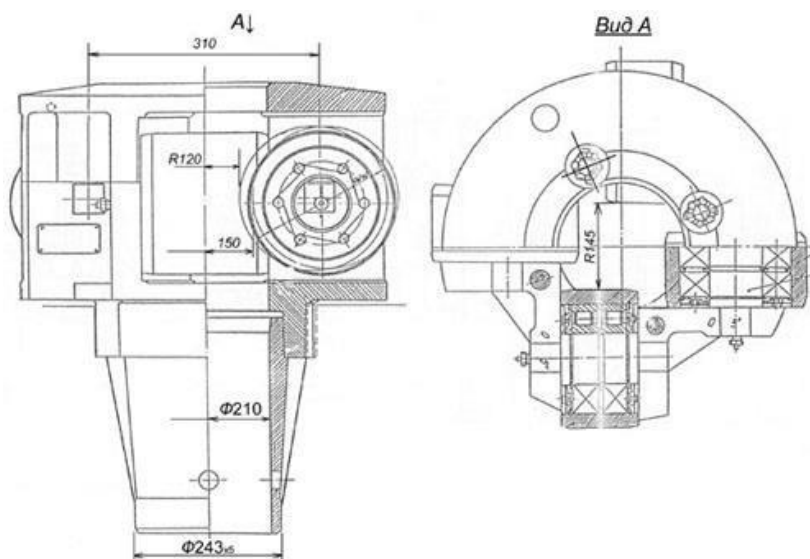
ROLLER GUIDE BUSHING

The roller guide bushing is an integral part of drilling equipment.

It is designed to transfer torque from the rotor table to the driving stem. The bushing reduces friction between the rollers and the stem and allows for maintaining the specified load on the drilling bit more accurately. For transferring torque from the rotor table to the driving stem and maintaining the specified load on the drilling bit. Torque - 3 tf.m.



Technical characteristics of bushings



Rollers 4062.45.451 (140x140) and 4062.45.451-1CB (89x89)

Sizes of kelly joints used: 89 mm, 112 mm, 140 mm, 155 mm.

Maximum transmitted torque, 3tf/m.

Weight: 540 kg max.

Overall dimensions:

Width 600 mm.

Height 747 mm.

Assembly units:

1. Cover, 1 pc.
2. Roller 4062.45.451, 4 pcs
3. Shock absorber, 8 pcs
4. Body, 1 pc.
5. Drive pipe, 1 pc.
6. Stud M30x160, 4 pcs
7. Nut M30, 4 pcs
8. Washer 30.65Г, 4 pcs

When developing and drilling deep wells, it is necessary to hold the drilling pipes that are located on the drilling rig during drilling; parts such as bushing (Kelly Bushing) are well suited for this task.

When using the rollers installed in the bushing, rotation of the pipes is achieved and they become aligned with the master bushing to hold the drive drilling pipes.

When the drilling depth reaches a large value, the drilling pipe begins to slide and descend lower along the well being drilled. By rotation of the rollers installed in the bushing, it is possible to reduce the pipe abrasion, thereby significantly increase its service life and reduce wear. The rollers can be selected in different required sizes, for example 140x140 or 89x89. It depends on the shape of kelly joint stem that are mounted during drilling a well; either square shape or hexagonal type pipes can be used.

*Sales Department of
YUGMASH Plant LLC
(861)236-25-50
www.yugmash.ru*